



# CA Workload Automation AE

## Vision and Roadmap

March 2018



# Disclaimer

Certain information in this presentation may outline CA's general product direction. This presentation shall not serve to (i) affect the rights and/or obligations of CA or its licensees under any existing or future license agreement or services agreement relating to any CA software product; or (ii) amend any product documentation or specifications for any CA software product. This presentation is based on current information and resource allocations as of February 21, 2018 and **is subject to change or withdrawal by CA at any time without notice. The development, release and timing of any features or functionality described in this presentation remain at CA's sole discretion.**

Notwithstanding anything in this presentation to the contrary, upon the general availability of any future CA product release referenced in this presentation, CA may make such release available to new licensees in the form of a regularly scheduled major product release. Such release may be made available to licensees of the product who are active subscribers to CA maintenance and support, on a when and if-available basis. The information in this presentation is not deemed to be incorporated into any contract.

Copyright © 2018 CA. All rights reserved. All trademarks, trade names, service marks and logos referenced herein belong to their respective companies.

**THIS PRESENTATION IS FOR YOUR INFORMATIONAL PURPOSES ONLY.** CA assumes no responsibility for the accuracy or completeness of the information. TO THE EXTENT PERMITTED BY APPLICABLE LAW, CA PROVIDES THIS DOCUMENT "AS IS" WITHOUT WARRANTY OF ANY KIND, INCLUDING, WITHOUT LIMITATION, ANY IMPLIED WARRANTIES OF MERCHANTABILITY, FITNESS FOR A PARTICULAR PURPOSE, OR NONINFRINGEMENT. **In no event will CA be liable for any loss or damage, direct or indirect, in connection with this presentation, including, without limitation, lost profits, lost investment, business interruption, goodwill, or lost data, even if CA is expressly advised in advance of the possibility of such damages.**

# Contents

- 1 PRODUCT ROADMAP HIGHLIGHTS
- 2 WA AE 11.3.6 SP7 & WCC 11.4 SP6 DETAILS
- 3 UNDER CONSIDERATION
- 4 INFLUENCING THE ROADMAP / Q&A

# PRODUCT ROADMAP HIGHLIGHTS – CA WORKLOAD AUTOMATION AE

DELIVERED (AE 11.3.6 SP7 / WCC 11.4 SP6)	PLANNED (AE 12.0)	UNDER CONSIDERATION
<ul style="list-style-type: none"><li>▪ <b>Simplified installation/Upgrade, Asset management</b> of Agents and server software</li><li>▪ <b>Cloud support (AWS, Azure)</b></li><li>▪ <b>Self-service automation</b> of AutoSys actions from OneAutomation</li><li>▪ <b>Enhance</b> email notification</li><li>▪ <b>Exploit</b> Oracle TAF failover</li><li>▪ <b>Reduce overhead</b> with lightweight load balancing</li></ul>	<ul style="list-style-type: none"><li>▪ <b>Modernize stack and improve scalability</b> with 64-bit support</li><li>▪ <b>Simplified installation/upgrade</b></li><li>▪ <b>WCC usability improvements</b></li><li>▪ <b>Orchestration</b> of web service and container applications</li><li>▪ <b>Stronger encryption</b></li><li>▪ <b>Expanded integration</b> with Apache Spark</li></ul>	<ul style="list-style-type: none"><li>▪ <b>Workload Lifecycle Management</b></li><li>▪ <b>Reduce TCO</b> with additional DB choices</li><li>▪ <b>Stronger Security</b> using password vaults</li><li>▪ Out-of-box templates to <b>deploy AE software with Automic ARA</b></li><li>▪ <b>Containerized packaging of Agents</b></li></ul>



## WA AE 11.3.6 SP7 & WCC 11.4 SP6 Details

# Agent Inventory



- View and manage agents defined
- Simple search functionality
- Configurable columns
- Granular security (None, View, Fetch, Control)
- Download agent log files and agentparm.txt
- Restart and Stop agent
- Auditing

CA Workload Automation

207.138.132.8:10432/wcc/ui/Launcher.html

CA technologies

CA Workload Automation AE

user037 Logout | My Profile | Help

DashboardMonitoringQuick ViewEnterprise Command LineReportingForecastQuick EditApplication EditorResourcesCredentialsAgent Inventory

Enter search text

Agent List

DATASOURCESACTIONSEXPORT TABLE

	Machine Name	Machine Status	Agent Type	Agent Name	Host	Port	Version	Platform	Server Name	Action Status	Action Timestamp
<input type="checkbox"/>	CANSM	Online	u - CA NSM o...		CANSM	0	Legacy	--	ACE		
<input type="checkbox"/>	RH3AGENT7520	Missing	System Agent	RH3AGENT7...	172.16.5.12	7520	--	linux	ACE		
<input type="checkbox"/>	RH3AGENT7521	Missing	System Agent	RH3AGENT7...	172.16.5.12	7521	--	linux	ACE		
<input type="checkbox"/>	RH3AGENT7522	Missing	System Agent	RH3AGENT7...	172.16.5.12	7522	--	linux	ACE		
<input type="checkbox"/>	RH3AGENT7523	Missing	System Agent	RH3AGENT7...	172.16.5.12	7523	--	linux	ACE		
<input type="checkbox"/>	RH3AGENT7524	Missing	System Agent	RH3AGENT7...	172.16.5.12	7524	--	linux	ACE		
<input type="checkbox"/>	RH3AGENT7525	Missing	System Agent	RH3AGENT7...	172.16.5.12	7525	--	linux	ACE		
<input type="checkbox"/>	RH3AGENT7526	Missing	System Agent	RH3AGENT7...	172.16.5.12	7526	--	linux	ACE		
<input type="checkbox"/>	RH3AGENT7527	Missing	System Agent	RH3AGENT7...	172.16.5.12	7527	--	linux	ACE		
<input type="checkbox"/>	RH3AGENT7528	Missing	System Agent	RH3AGENT7...	172.16.5.12	7528	--	linux	ACE		
<input type="checkbox"/>	RH3AGENT7529	Missing	System Agent	RH3AGENT7...	172.16.5.12	7529	--	linux	ACE		
<input type="checkbox"/>	RH3AGENT7530	Missing	System Agent	RH3AGENT7...	172.16.5.12	7531	--	linux	ACE		

Page 1 of 1 | Displaying 1 - 15 of 15

# Additional New Features

- Integration with CA Automatic One Automation Platform (EM like functionality)
- Lightweight round-robin load balancing
- Email Notification
  - Template based formatting
  - Job alarm support
- Control execution by job owner
- Oracle Transparent Application Failover (TAF) support
- AWS RDS & Azure SQL Server support



# Enhancements to Existing Features

- Increased password length to 127 characters
- Increased CMD job command to 1000 characters
- Informatica LDAP domain support
- Enhanced machine status monitoring
- Differentiate job FAILURE and TERMINATED status
- Autotrack reporting by application and/or group

# Enhancements to Existing Features

- Web service enhancements
  - Event/change-status-job method
  - Job type filtering
  - Case-insensitive description filtering
- Expanded global variable substitution
  - Web services ws\_parameter
  - HDFS, Informatica, SQL Server job types
- Simplified problem reporting with Remote Engineer

# PRODUCT ROADMAP HIGHLIGHTS – CA WORKLOAD AUTOMATION AE

DELIVERED (AE 11.3.6 SP7 / WCC 11.4 SP6)	PLANNED (AE 12.0)	UNDER CONSIDERATION
<ul style="list-style-type: none"><li>▪ <b>Simplified installation/Upgrade, Asset management</b> of Agents and server software</li><li>▪ <b>Cloud support (AWS, Azure)</b></li><li>▪ <b>Self-service automation</b> of AutoSys actions from OneAutomation</li><li>▪ <b>Enhance</b> email notification</li><li>▪ <b>Exploit</b> Oracle TAF failover</li><li>▪ <b>Reduce overhead</b> with lightweight load balancing</li></ul>	<ul style="list-style-type: none"><li>▪ <b>Modernize stack and improve scalability</b> with 64-bit support</li><li>▪ <b>Simplified installation/upgrade</b></li><li>▪ <b>WCC usability improvements</b></li><li>▪ <b>Orchestration</b> of web service and container applications</li><li>▪ <b>Stronger encryption</b></li><li>▪ <b>Expanded integration</b> with Apache Spark</li></ul>	<ul style="list-style-type: none"><li>▪ <b>Workload Lifecycle Management</b></li><li>▪ <b>Reduce TCO</b> with additional DB choices</li><li>▪ <b>Stronger Security</b> using password vaults</li><li>▪ Out-of-box templates to <b>deploy AE software with Automic ARA</b></li><li>▪ <b>Containerized packaging of Agents</b></li></ul>

# Simplified Installation/Upgrade

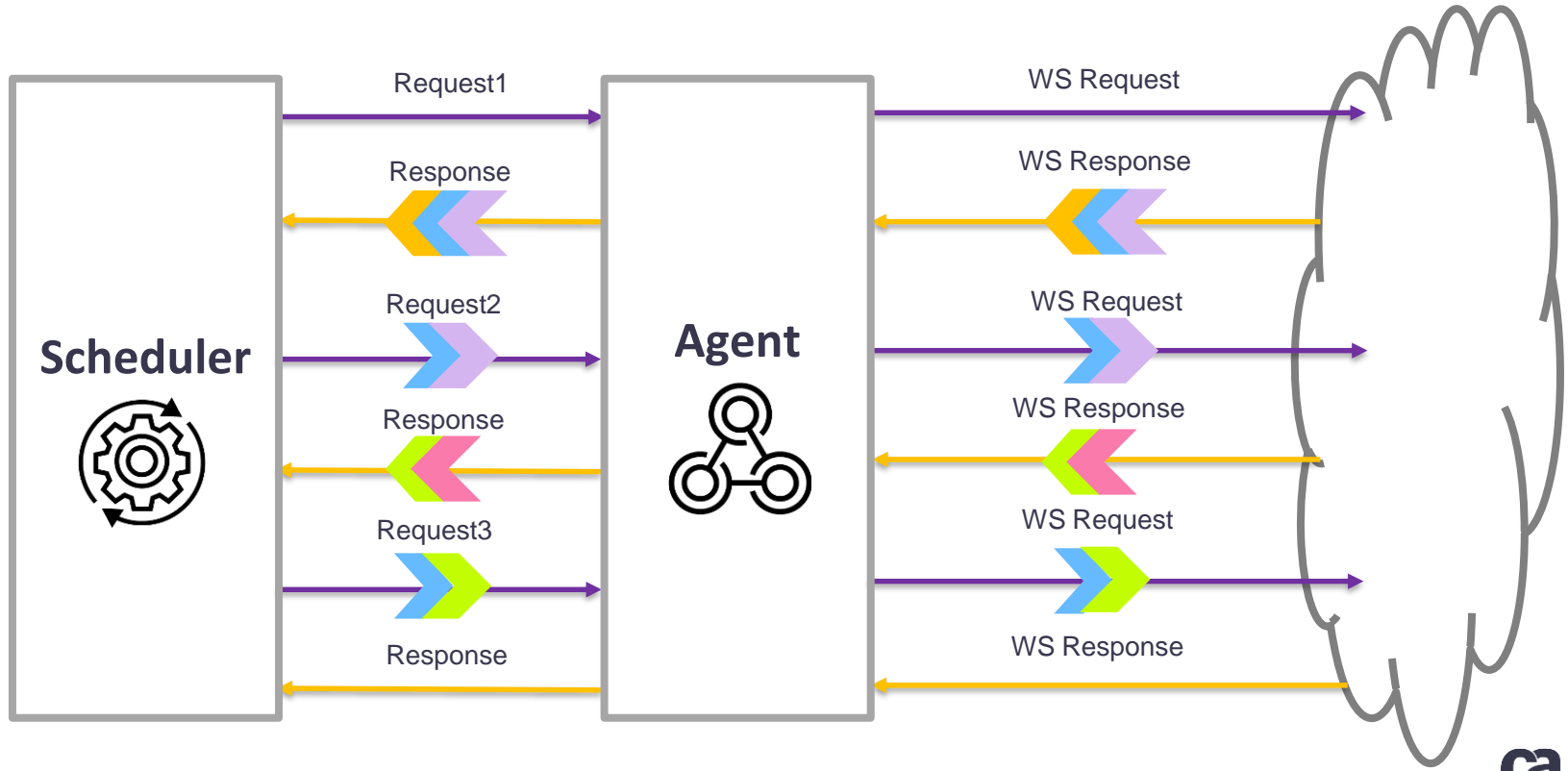
- Platform based images
- More robust dependency validation
- Centralized agent upgrades

# WCC Usability

- Focus on Monitoring
- More intuitive
- Optimize most frequent tasks (e.g. application troubleshooting)
- Improve scalability
- More personalization

# Web Service Orchestration

- REST
- SOAP



# Under Consideration

Feature	Description	Benefit
Workload Lifecycle Management	Tool used to promote product artifacts between tiers (e.g. Dev, UAT, QA, Prod)	Reduce administration, improve quality, and reduce risk associated with promoting changes between tiers.
Alternative Databases	Provide additional database alternatives	Provide more database choices with the intention of lowering the overall TCO
Password Vaults	Support for password vault solutions	Increase security and reduce administration by minimizing password handling
CA Automic Release Automation integration	Integrate with CA Automic Release Automation	Ability to deploy WA AE components and application workflows together with Lifecycle Management

# Are You Participating in Community Ideation?

## CA Communities Ideation

- Submit your ideas on [communities.ca.com](https://communities.ca.com)
- Vote and comment on ideas that are important to you
- CA product management reviews ideas and updates status as they move through the lifecycle
- “Currently Planned” idea status indicates inclusion in Agile Backlog or Product Roadmap

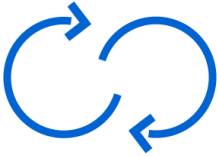
## Customer Validation

- Register to participate in:
  - Live Demos/End-of-Sprint Review meetings
  - Private - Members Only - Online Community
  - Pre-Complete Release Feature Testing and Support
  - Upgrade Support From SWAT Team
- How to register: [validate.ca.com](https://validate.ca.com)



*We know that*

# WINNING COMPANIES FOCUS ON **FOUR KEY PRINCIPLES**



**Agility**



**Automation**



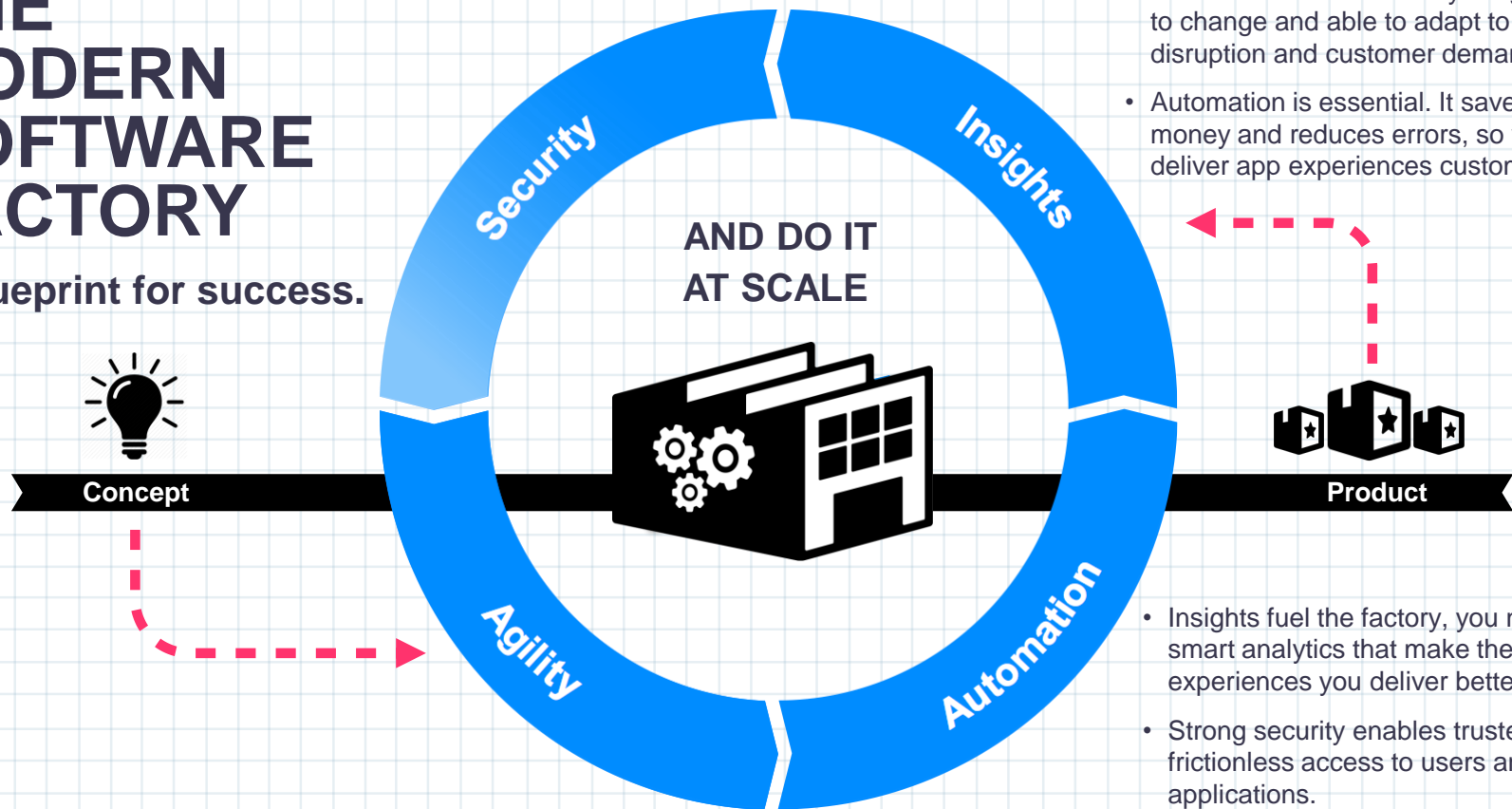
**Insights**



**Security**

# THE MODERN SOFTWARE FACTORY

A blueprint for success.



- A modern software factory is agile, built to change and able to adapt to market disruption and customer demand.
- Automation is essential. It saves time and money and reduces errors, so you can deliver app experiences customers love.

- Insights fuel the factory, you need smart analytics that make the app experiences you deliver better.
- Strong security enables trusted, frictionless access to users and applications.



**Your goals are our goals.**  
**We are literally reinventing how  
we create our development plans by  
sharing our product roadmaps.**

**CA Customers Register at [CA.com/Roadmap](https://ca.com/Roadmap)**



# Questions

**TO SEND US YOUR FEEDBACK ON THIS SESSION: COMPLETE THE SURVEY IN YOUR EMAIL**



# Thank You.



## **Dan Shannon**

Sr. Director, Product Management

[Daniel.Shannon@ca.com](mailto:Daniel.Shannon@ca.com)



**in**

# Backup Content



# PRODUCT ROADMAP HIGHLIGHTS – CA WORKLOAD AUTOMATION AE

DELIVERED (AE 11.3.6 SP6 / WCC 11.4 SP5)	PLANNED (AE 11.3.6 SP7 / WCC 11.4 SP6)	UNDER CONSIDERATION
<ul style="list-style-type: none"><li>▪ <b>Eliminate Sybase passwords</b> with Kerberos</li><li>▪ <b>Expanded integration</b> with Informatica</li><li>▪ <b>Expanded integration</b> with MS SQL Server</li><li>▪ <b>Simplify JMS</b> interaction by supporting common patterns</li><li>▪ <b>Simplify job administration</b> by expanding global variable substitution</li><li>▪ <b>Extended</b> integration for SCP/SFTP &amp; DB job types</li></ul>	<ul style="list-style-type: none"><li>▪ <b>Simplified installation/Upgrade, Asset management</b> of Agents and server software</li><li>▪ <b>Cross-Scheduler SLA management</b> with iDash</li><li>▪ <b>Cloud support (AWS, Azure)</b></li><li>▪ <b>Self-service automation</b> of AutoSys actions from CA Automic One Automation</li><li>▪ <b>Enhance</b> email notification</li><li>▪ <b>Exploit</b> Oracle TAF failover</li><li>▪ <b>Reduce overhead</b> with lightweight load balancing</li><li>▪ <b>Modernize stack and improve scalability</b> with 64-bit support (12)</li></ul>	<ul style="list-style-type: none"><li>▪ <b>Simplified installation/upgrade</b></li><li>▪ <b>WCC usability improvements</b></li><li>▪ <b>Orchestration</b> of web service and container applications</li><li>▪ <b>Expanded integration</b> with Apache Spark</li><li>▪ <b>Workload Lifecycle Management</b></li><li>▪ Out-of-box templates to <b>deploy AE software with CA Automic Release Automation</b></li><li>▪ <b>Containerized packaging of Agents</b></li></ul>





# CA Automic One Automation Platform Integration



# CA Automic One Automation Integration Summary

- Event Management (Feb 2018)
- Bi-directional communication
- Release Automation
- Lifecycle Management